



Year 6 Curriculum Map Autumn 2—2025



Foundation Subject Outcomes

Geography — Children will look population, including density, distribution, and how population is impacted by and is impacting our planet’s behaviour

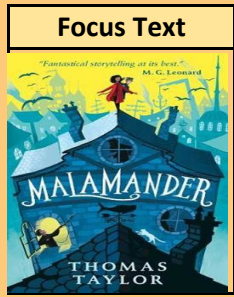
Computing — Children will be using iMovie to create persuasive adverts for Mashpi Lodge, an Ecuadorian eco hotel.

Science — Children will be investigating circuits and seeing if changing one component of a circuit effects the brightness of a bulb.

French— The Children will use different forms of verbs to do or play sports and express preferences..

PSHE — Children will be exploring similarities and differences, and how we can value the differences in the world around us.

Art— Children will explore how artists express ideas and how they use scale to do so.



| |
|--|
| PE |
| We will be practising a range of football skills including dribbling, passing, shooting and marking. |
| RE |
| In R.E. we will be learning about incarnation, with a focus on the question, ‘Was Jesus the Messiah?’ |

| Key Curriculum Vocabulary | Definition |
|---------------------------|--|
| Biome | A large naturally occurring community of flora and fauna occupying a major habitat . |
| Hemisphere | A half of the earth, divided into northern and southern halves by the equator. |
| Economy | An economy is the organisation of a country’s money, industry, and trade. |
| Longitude | A geographic coordinate that specifies the east–west position of a point on the surface of the Earth, or another celestial body. |
| Latitude | The latitude of the Earth gives the distance north and south of the equator. It is measured in degrees |

| Maths | Key vocabulary | Definition |
|---|----------------------------|--|
| In Maths we will be focusing on fractions. This will involve, ordering, comparing and operating with fractions. | Equivalent fraction | An equivalent fraction is a fraction that has the same value as another. They can be found through multiplication and division |
| | Simplify fractions | To simplify a fraction is to find the lowest possible equivalent fraction. |
| | Improper fraction | An improper fraction is a fraction whose numerator is larger than its denominator and therefore has a value greater than 1. |
| | Mixed number | A mixed number is a whole number, and a proper fraction represented together. |

| English | Key Vocabulary | Definition |
|---|---------------------|--|
| <p>We will be finishing writing our warning stories which are based on our class novel, Holes.</p> <p>We will then be looking at persuasive writing, where we will write a promotional leaflet about Mashpi Lodge; a luxury hotel based in the rainforest of Ecuador.</p> | Preposition | A word that often gives information about time or place. E.g. after, before, above, between, next to, etc. |
| | Pronoun | A word that takes the place of a noun in a sentence to avoid repetition. |
| | Determiner | A word that shows whether you are referring to a noun in general or in particular, as well as the quantity. E.g. A banana, the banana, five bananas, many bananas. |
| | Conjunctions | Words which connect clauses or sentences. |

Home Learning Tips

Reading is your child’s primary home learning and we would like them to record their reading 3 times per week. Maths home learning will be allocated weekly; please refer to the calculation policy, which can be found on the school website, for guidance on methods and strategies. English home learning will be predominantly spelling and grammar based, linking to the week’s learning. Information on weekly home learning and projects are also mentioned on our class pages.