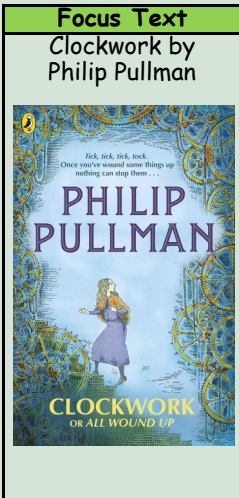




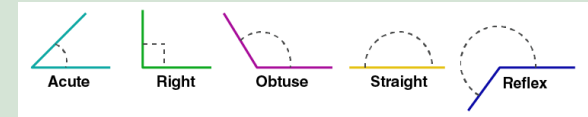
Home Learning Tips

English and Maths will be set once a week based on what we have been learning in school. Keep practising your times tables to 12 and be confident with the corresponding division facts. Read and record a minimum of three times a week. Predict what might happen next or try to summarise the story. Don't forget to read a variety of text types, both fiction and non-fiction.

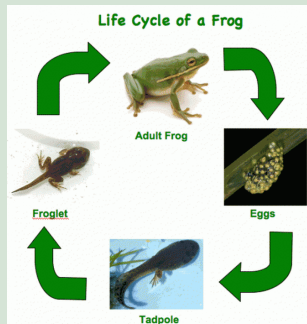


English	Key Vocabulary	Definition
<p>In Writing, we will be exploring instructional texts.</p> <p>In Reading, children will read a range of challenging texts and focus on reading fluency (echo and choral reading) and inference based questions.</p>	Imperative (bossy) verbs	An imperative verb is a verb that gives a command, instruction, or request. They are often called "bossy verbs" because they tell someone what to do. They usually appear at the beginning of a sentence and are often found in instructions.
	Bullet points	<p>Bullet points can be used to:</p> <ul style="list-style-type: none"> break up complicated information make it easier to read turn it into a list
	Adverbs	<p>An adverb is simply a word that describes a verb.</p> <p>He ate his breakfast quickly.</p> <p>The word 'quickly' is an adverb as it tells us how he 'ate' (the verb) his breakfast.</p>
	Formal tone	Writing which is serious and uses sophisticated language choices. E.g. If writing to the Prime Minister.

Subject	Outcome
Science	To develop an understanding of the life-cycles of different animals and reproduction.
Computing	To explore 'Artificial Intelligence'.
French	To learn about verbs and adjective agreements
Music	To develop an understanding of composition to
Art	To learn about interactive installation.
PSHE	To learn about 'being my best'
Geography	To explore the desert: Would you like to live in the desert?



Maths	Key vocabulary	Definition
To develop knowledge of shape and geometry.	Right-angle	An angle that measures at exactly 90 degrees.
To develop knowledge of decimals.	Acute angle	An angle that is less than 90 degrees.
	Obtuse angle	An angle between 90 and 180 degrees.
	Reflex angle	An angle larger than 180 degrees.



PE

To develop key skills in athletics in preparation for sports day.

RE

To learn about Islam: What is the best way for a Muslim to show commitment to God?