

Phase 5



ay
a_e
a



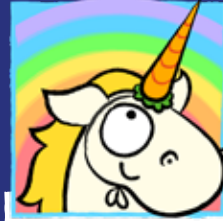
ea
e_e
e
ie
y



ie
i_e
i



ow
o_e
o
oe



ew
u_e
u



aw
au
ore



Can sometimes
represent 'oo'
depending on
word or accent.



ir



oy



ou



nk



ph



wh



ve



tch



are



ea

Phase 6



er
wor



g
ge
dge



kn
gn



ti
ssi
ci



al
all
war



ear



y



c



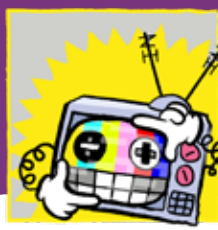
wr



mb



ey



s



o



wa